



Texas Orthoimagery Program

©2010 Google™

© 2011 Google

30°38'36.76" N 95°56'19.73" W elev 351 ft

Imagery Date: 12/31/2008 1995

Eye alt 1066 ft



HUC 12070103

Texas Orthoimagery Program

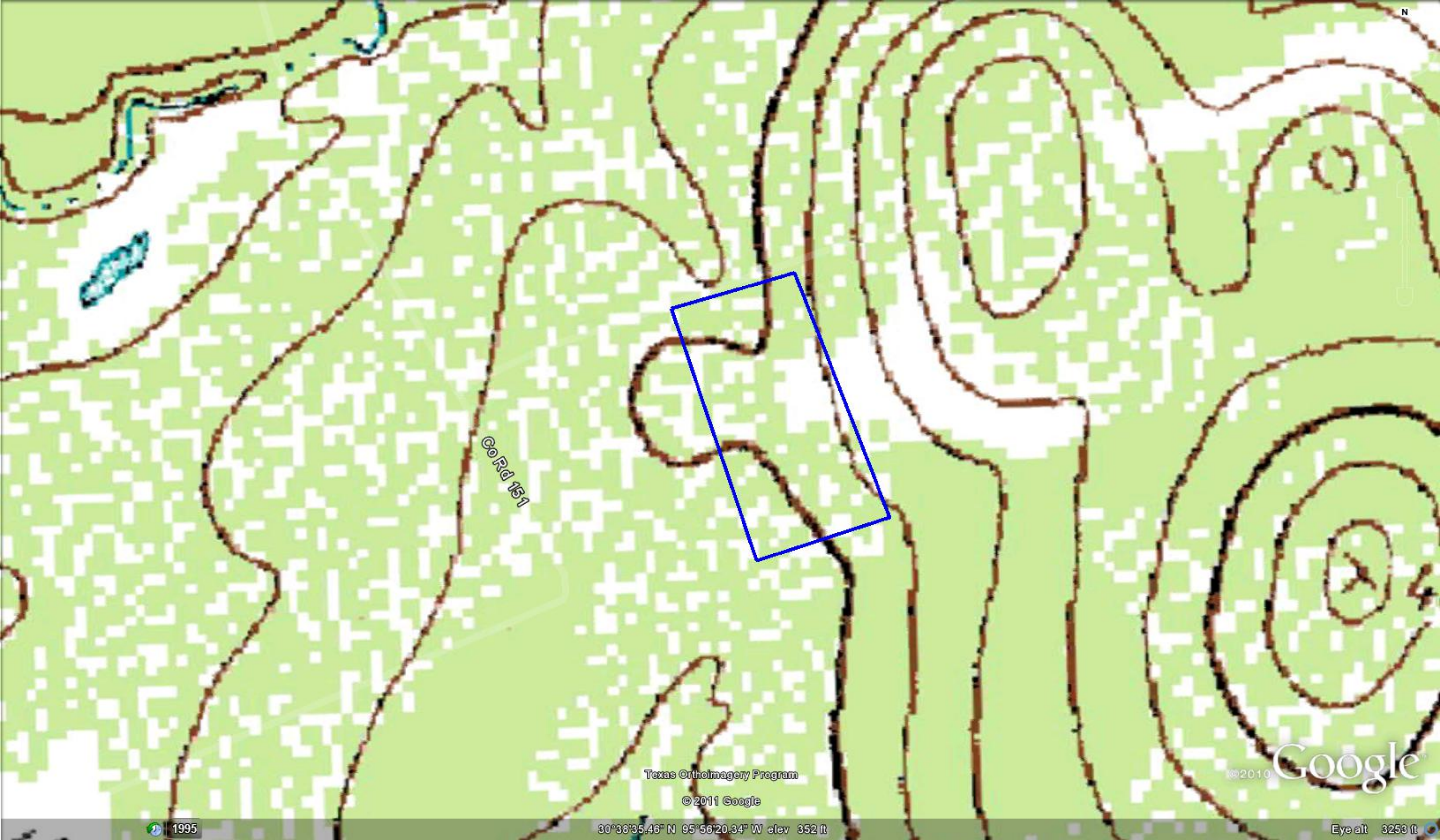
© 2011 Google

©2010 Google™

1995

30°38'35.94" N 95°56'19.17" W elev 355 ft

Eye alt 1775 ft



Co Rd 151

Texas Orthoimagery Program

© 2011 Google

©2010 Google

1995

30°38'35.46" N 95°56'20.34" W elev 352 ft

Eye alt 3253 ft