

133 acres SOLD

235 acre Ranch for sale

84 acres SOLD

Co Rd 345

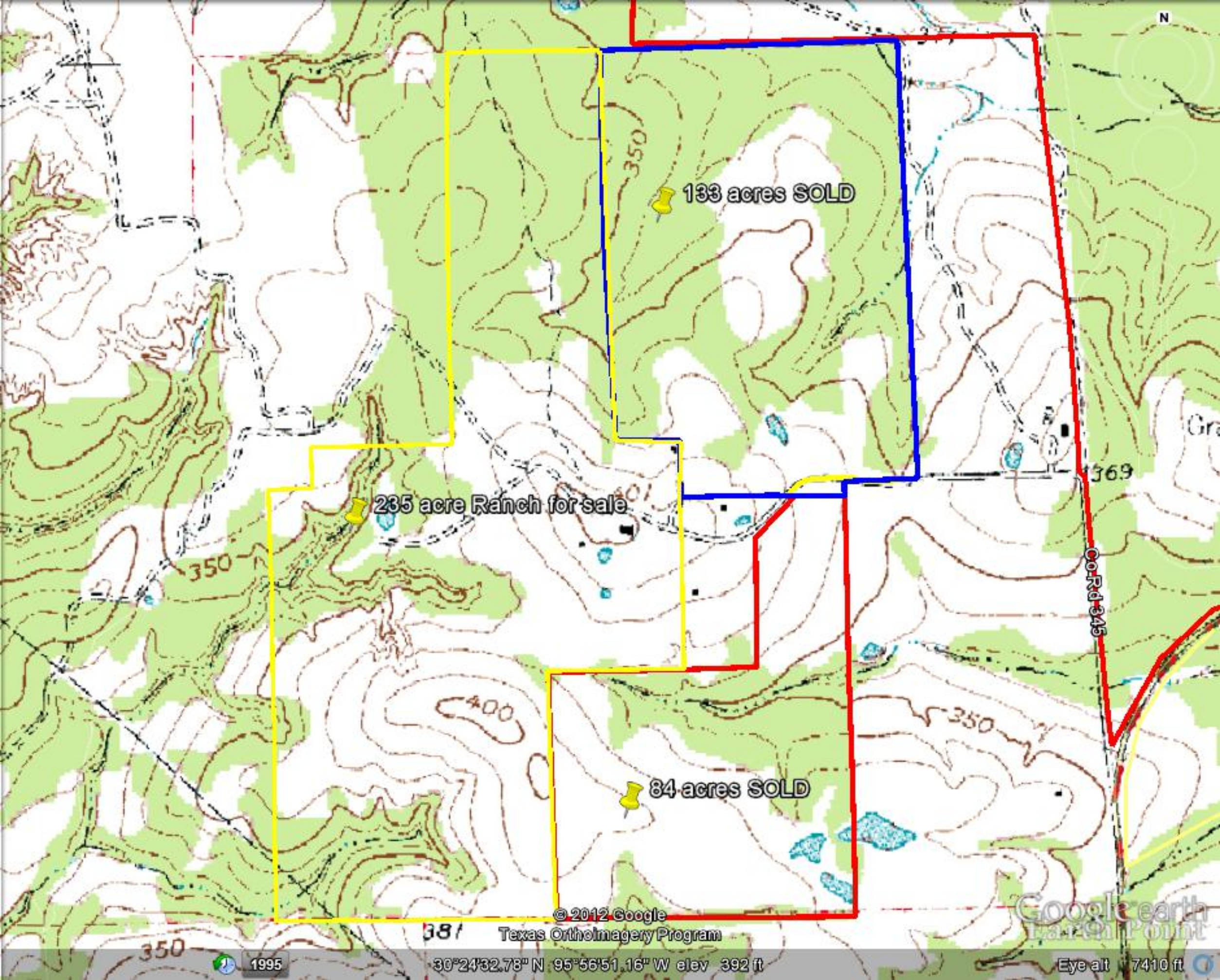
© 2012 Google
Texas Orthoimagery Program

Google earth

Imagery Date: 12/31/2008 1995

30°24'32.78" N 95°56'51.16" W elev 392 ft

Eye alt 7410 ft



133 acres SOLD

235 acre Ranch for sale

84 acres SOLD

369

350

400

350

381

© 2012 Google

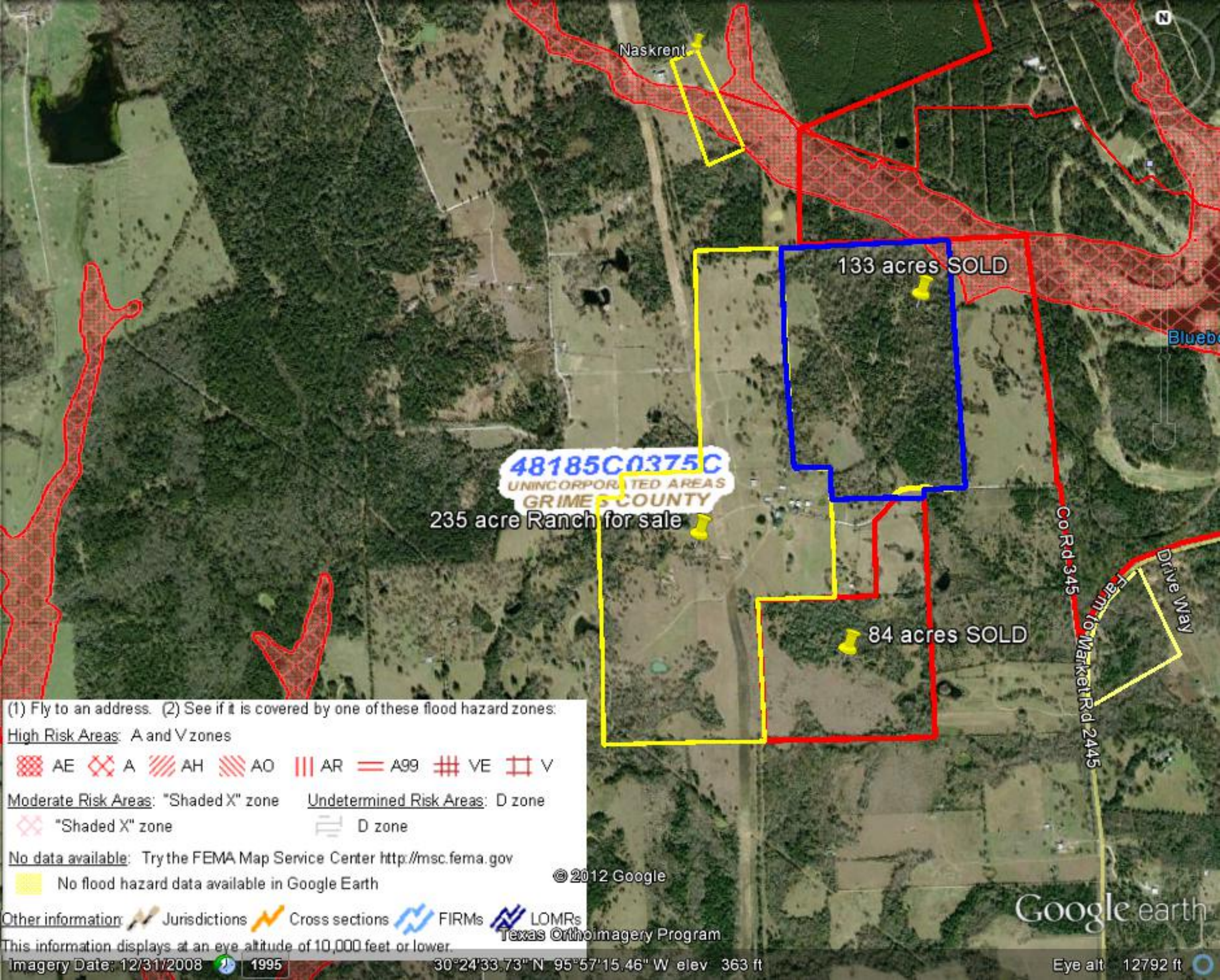
Texas OrthoImagery Program

Google earth
Laramie Point

1995

30°24'32.78" N 95°56'51.16" W elev 392 ft

Eye alt 7410 ft



48185C0375C
UNINCORPORATED AREAS
GRIMES COUNTY

235 acre Ranch for sale

133 acres SOLD

84 acres SOLD

Naskrent









Co Rd 345
Farm to Market Rd 2445

Drive Way



Bluebo

(1) Fly to an address. (2) See if it is covered by one of these flood hazard zones:


High Risk Areas: A and V zones





 AE
  A
  AH
  AO
  AR
  A99
  VE
  V

Moderate Risk Areas: "Shaded X" zone **Undetermined Risk Areas:** D zone


 "Shaded X" zone  D zone

No data available: Try the FEMA Map Service Center <http://msc.fema.gov>

 No flood hazard data available in Google Earth

Other information:  Jurisdictions  Cross sections  FIRMs  LOMRs

This information displays at an eye altitude of 10,000 feet or lower.

Imagery Date: 12/31/2008  1995 30°24'33.73" N 95°57'15.46" W elev 363 ft Eye alt 12792 ft

© 2012 Google

Google earth