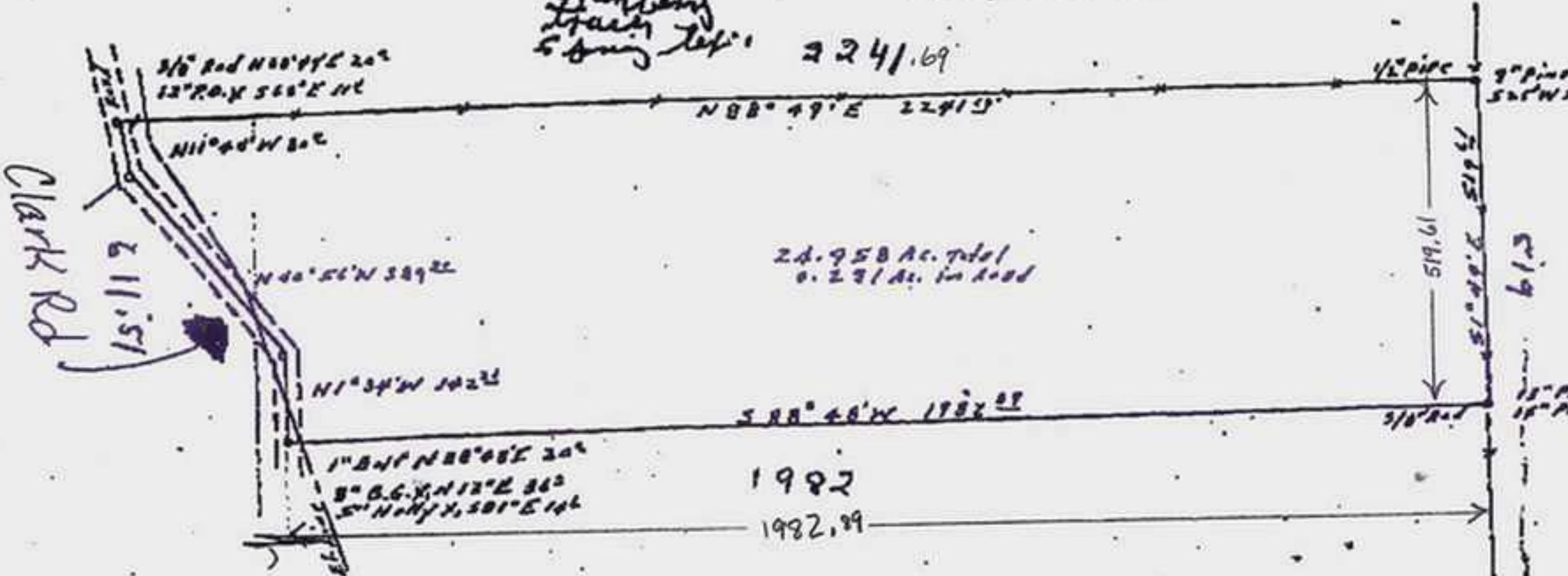


2
369.34
82.00
142.21
611.51

Thomas L
Brown
23038
Stanley
Tracy
Spring Top
2241.69

D
1.94
Ken Winter
Magnolia Estate



Survey of 24.958 acres out of the Josiah G. Dunn Survey,
Grimes County, Texas. Scale 1 inch = 300 feet.
Surveyed by: Evans Moody
May 28, 1976
Evans Moody

