



$N42^{\circ}22'42'' E$   
536.67

411.0

$S34^{\circ}00'00'' E$

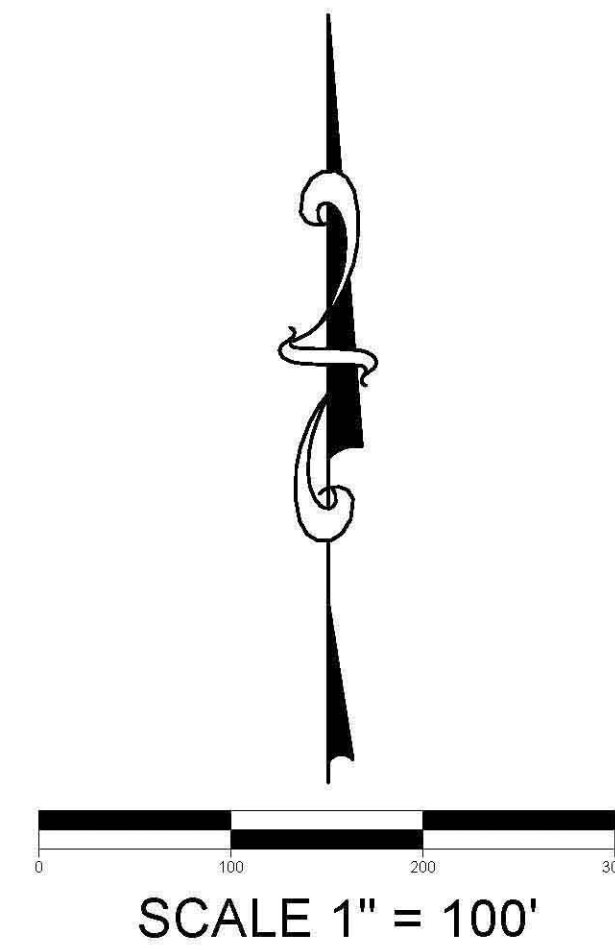
$S25^{\circ}00'00'' E$   
25' B.L.

LOT 16  
2.1500 acres  
93654.0000 sq ft

RUE  
RUE

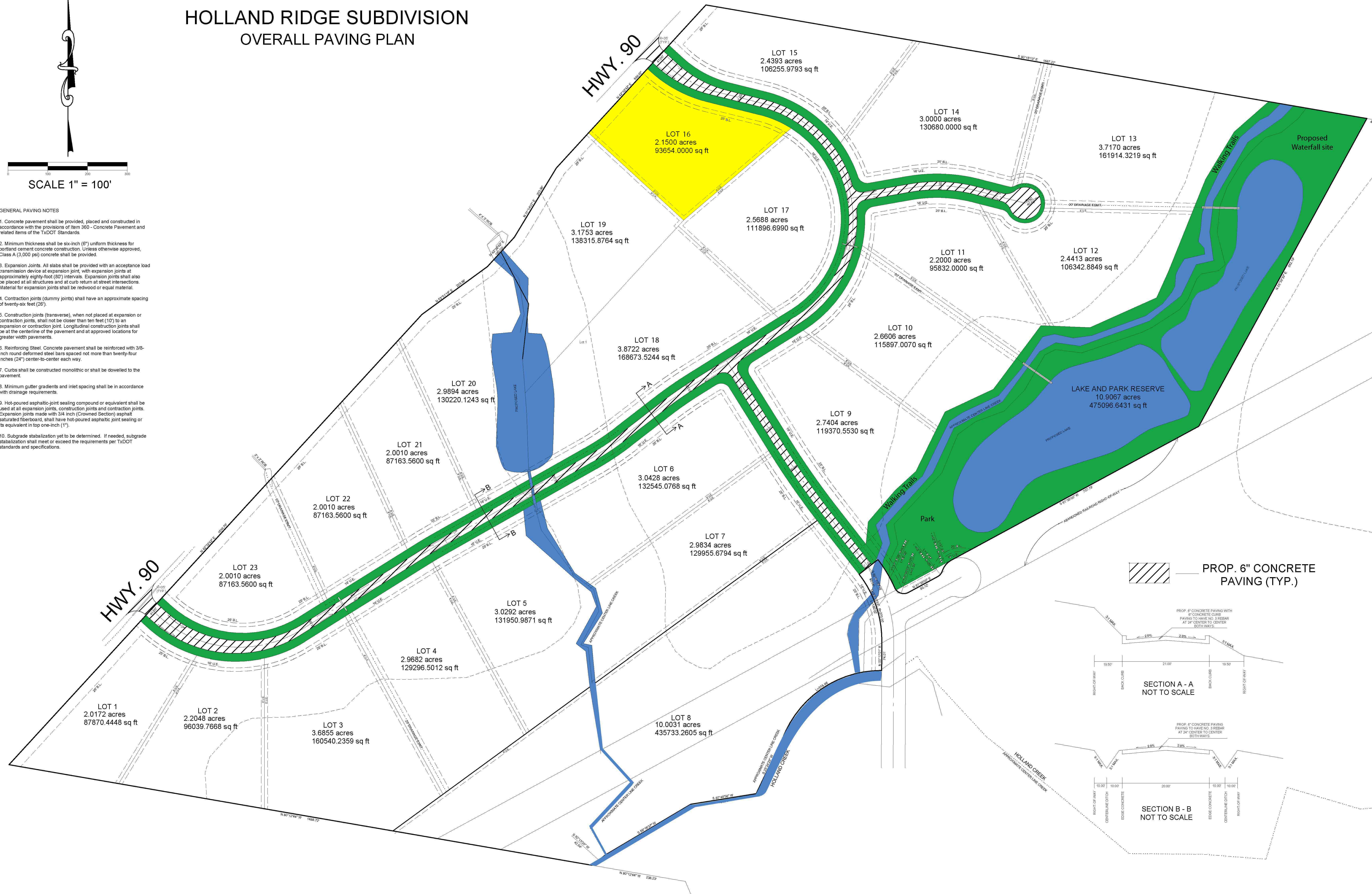
RUE  
RUE

# HOLLAND RIDGE SUBDIVISION OVERALL PAVING PLAN



## GENERAL PAVING NOTES

- Concrete pavement shall be provided, placed and constructed in accordance with the provisions of Item 360 - Concrete Pavement and related items of the TxDOT Standards.
- Minimum thickness shall be six-inch (6") uniform thickness for portland cement concrete construction. Unless otherwise approved, Class A (3,000 psi) concrete shall be provided.
- Expansion Joints. All slabs shall be provided with an acceptance load transmission device at expansion joint, with expansion joints at approximately eighty-foot (80') intervals. Expansion joints shall also be placed at all structures and at curb return at street intersections. Material for expansion joints shall be redwood or equal material.
- Contraction joints (dummy joints) shall have an approximate spacing of twenty-six feet (26').
- Construction joints (transverse), when not placed at expansion or contraction joints, shall not be closer than ten feet (10') to an expansion or contraction joint. Longitudinal construction joints shall be at the centerline of the pavement and at approved locations for greater width pavements.
- Reinforcing Steel. Concrete pavement shall be reinforced with 3/8-inch round deformed steel bars spaced not more than twenty-four inches (24") center-to-center each way.
- Curbs shall be constructed monolithic or shall be dowelled to the pavement.
- Minimum gutter gradients and inlet spacing shall be in accordance with drainage requirements.
- Hot-poured asphaltic-joint sealing compound or equivalent shall be used at all expansion joints, construction joints and contraction joints. Expansion joints made with 3/4 inch (Crowned Section) asphalt saturated fiberboard, shall have hot-poured asphaltic joint sealing or its equivalent in top one-inch (1").
- Subgrade stabilization yet to be determined. If needed, subgrade stabilization shall meet or exceed the requirements per TxDOT standards and specifications.



PROP. 6" CONCRETE PAVING (TYP.)

