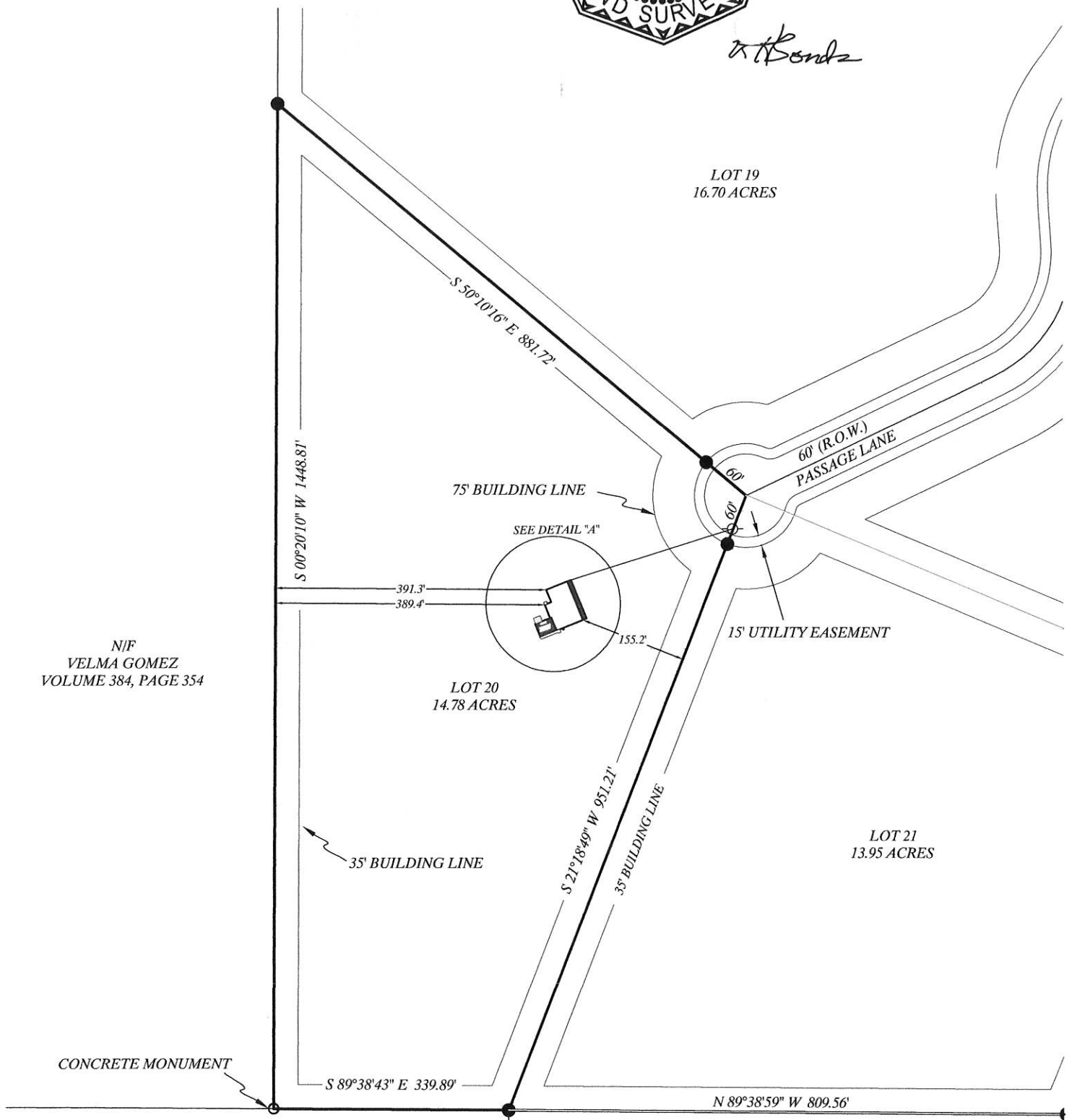




SCALE 1" = 200'

at Bonds



GENERAL NOTES:

BEARINGS SHOWN HEREON ARE HONORING THE PLAT CALLED
BEARINGS ON PLAT OF CANEY CREEK CROSSING SUBDIVISION
RECORDED IN VOLUME 1219, PG. 611 OF THE REAL PROPERTY RECORDS
OF GRIMES COUNTY, TEXAS (R.P.R.G.C.T.)

THE FOLLOWING EASEMENTS DO APPLY TO THIS TRACT:

1) A 60' WIDE EASEMENTS CONVEYED TO GRIMES COUNTY IN THE
FOLLOWING VOLUME AND PAGES: 274/405, 222/24, 1093/334, 1100/227,
RECORDED IN THE COUNTY CLERK'S RECORDS OF GRIMES COUNTY,
TEXAS

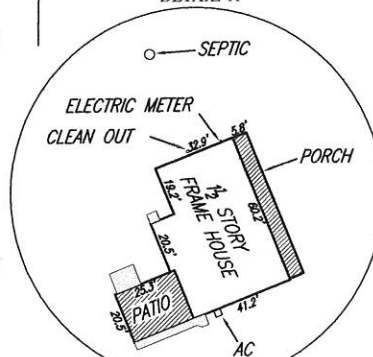
2) EASEMENTS, SET BACK LINES AND ALL OTHER MATTERS SET FORTH
IN PLAT RECORDED IN VOLUME 1219, PAGE 611, (R.P.R.G.C.T.), AND
RESTRICTIONS RECORDED IN VOL. 1218, PAGE 176 (R.P.R.G.C.T.)

HERE ARE OTHER EASEMENTS AND RESTRICTIONS LISTED ON THE

N/F
RICHARD D. JOLLY AND
JOYLENE K. JOLLY
VOLUME 713, PAGE 377

N/F
LOUIS KLOVENSKI
AND DIANNE CHUMLEY

DETAIL "A"



LEGEND

● 1/2" IRON ROD SET
— UNDERGROUND ELECTRIC
— UE — UE —
—O— UTILITY POLE

BUYER	FRANK J. OWENS AND CHARLOTTE OWENS
TITLE COMPANY	GUARANTY TITLE COMPANY OF GRIMES COUNTY
G.F. No.	07-0452
DATE	APRIL 2008