

$I = 26'28'46''$
 $R = 374.43$
 $L = 635.44$
 $T = 323.50$
 $CL = 624.80$
 $CB = 50'44'58'' E$

Electric Line as shown on
 survey dated 12/30/46 by
 Martin L. Riley, Jr. P.L.S.
 No. 4094, State of Texas

Larry W. King, et ux
 Called 50 Ac.
 1056/348 D.R.S.C.

6 5.553 Ac.

7 18.876 Ac.

8 16.595 Ac.

9 14.209 Ac.

24 15.971 Ac.

25 15.391 Ac.

26 14.338 Ac.

27 10.881 Ac.

28 17.113 Ac.

29 17.076 Ac.

16.19

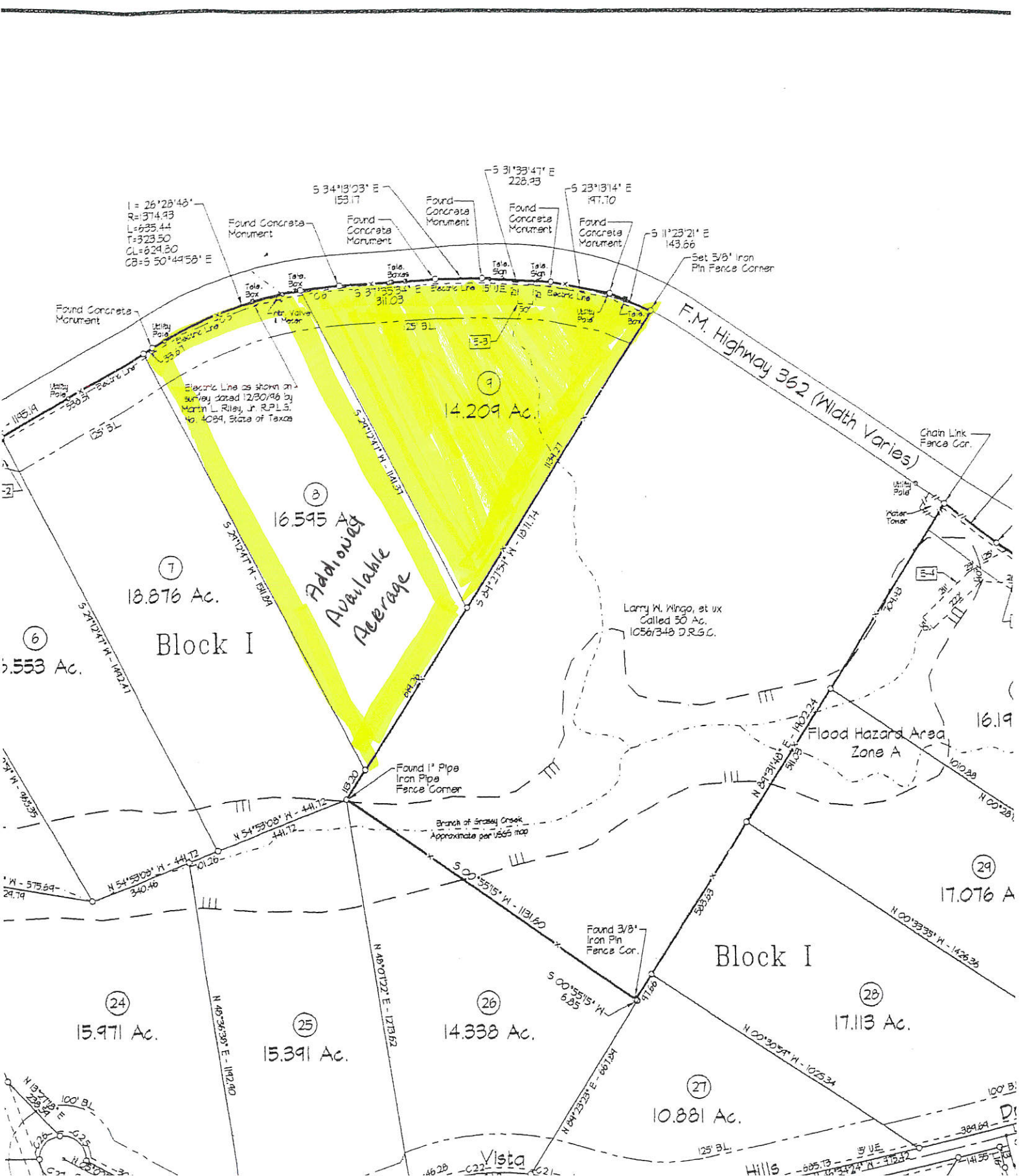
F.M. Highway 362 (Width Varies)

Flood Hazard Area Zone A

Vista

Hills

D



$I = 26'28'46''$
 $R = 374.43$
 $L = 635.44$
 $T = 323.50$
 $CL = 624.80$
 $CB = 50'44'58'' E$

Electric Line as shown on
 survey dated 12/30/96 by
 Martin L. Riley, Jr. R.P.L.S.
 No. 4094, State of Texas

Addingway
 Available
 Acreage

F.M. Highway 362 (Width Varies)

Flood Hazard Area Zone A

Larry N. Wingo, et ux
 Called 50 Ac.
 1056/348 D.R.S.C.

6
5.553 Ac.

7
18.876 Ac.

Block I

3
16.595 Ac.

9
14.209 Ac.

24
15.971 Ac.

25
15.391 Ac.

26
14.338 Ac.

27
10.881 Ac.

28
17.113 Ac.

29
17.076 Ac.

Block I

Vista

Hills